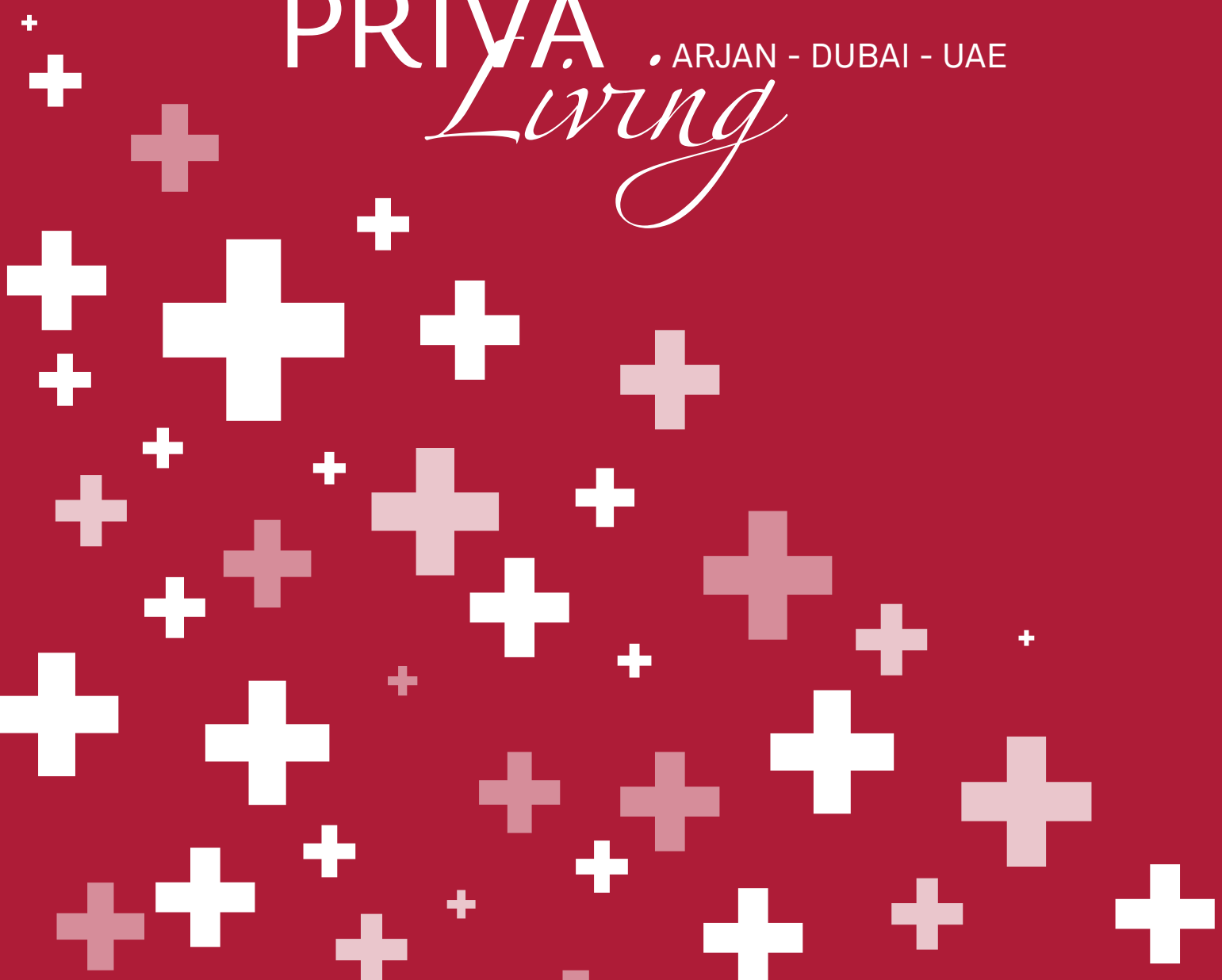
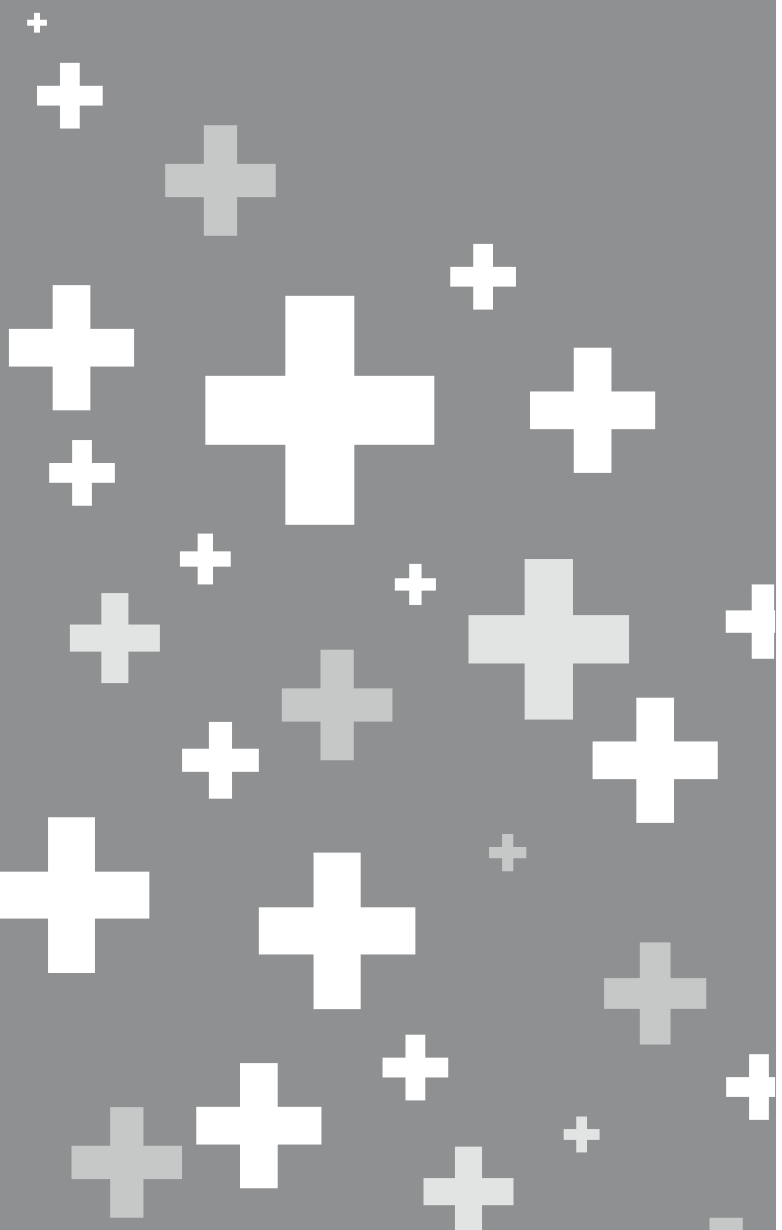


PRIVÀ • ARJAN - DUBAI - UAE
Living



04 ABOUT DUBAI
06 THE LOCATION
08 PRIVÀ LIVING APARTMENTS
12 1 BEDROOM APARTMENTS
18 2 BEDROOM APARTMENTS
21 2 BEDROOM AND STUDY APARTMENT
24 POOL & GYM
26 ARCHITECTURAL FINISHES BOARD
28 CONTACTS





PRIVA
Living

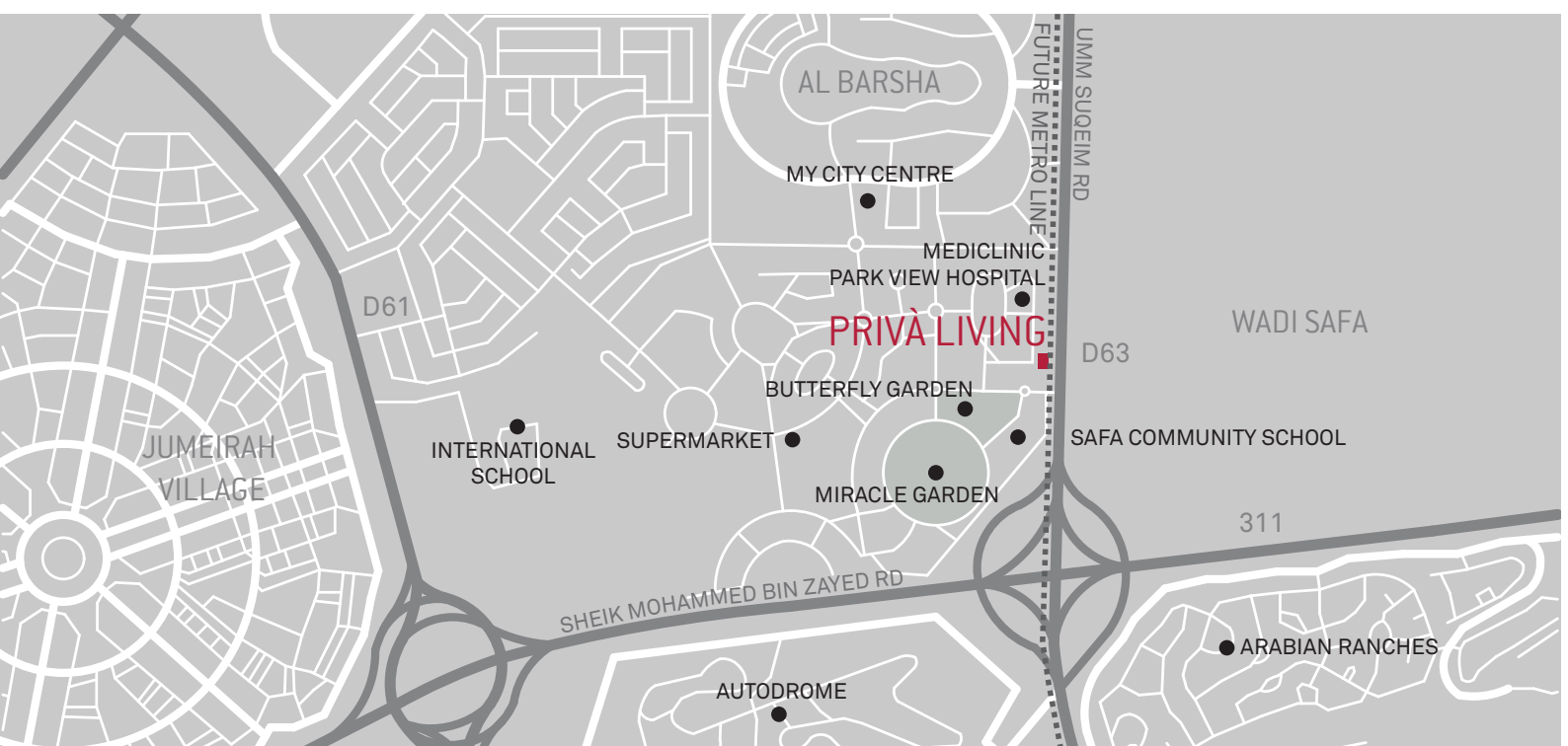
WELCOME TO DUBAI

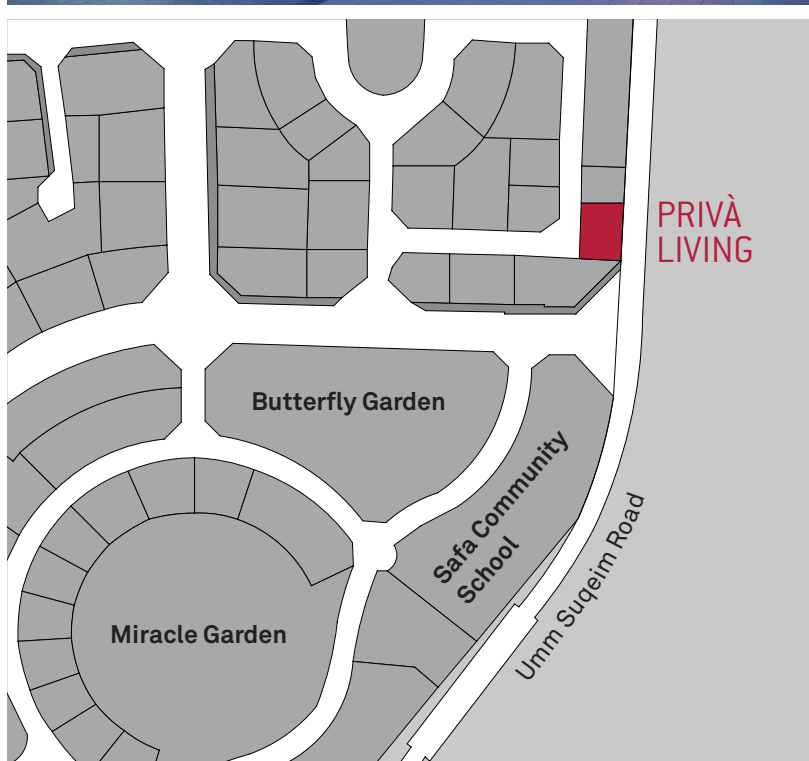
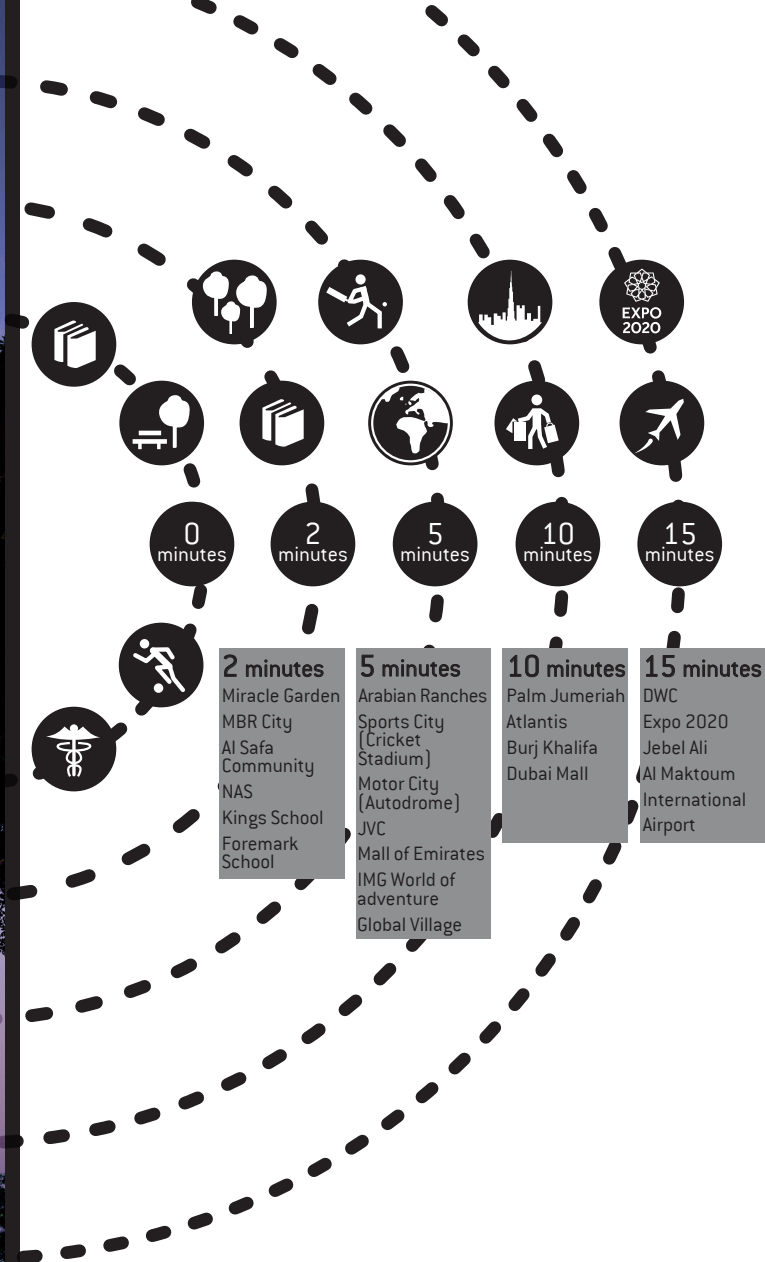
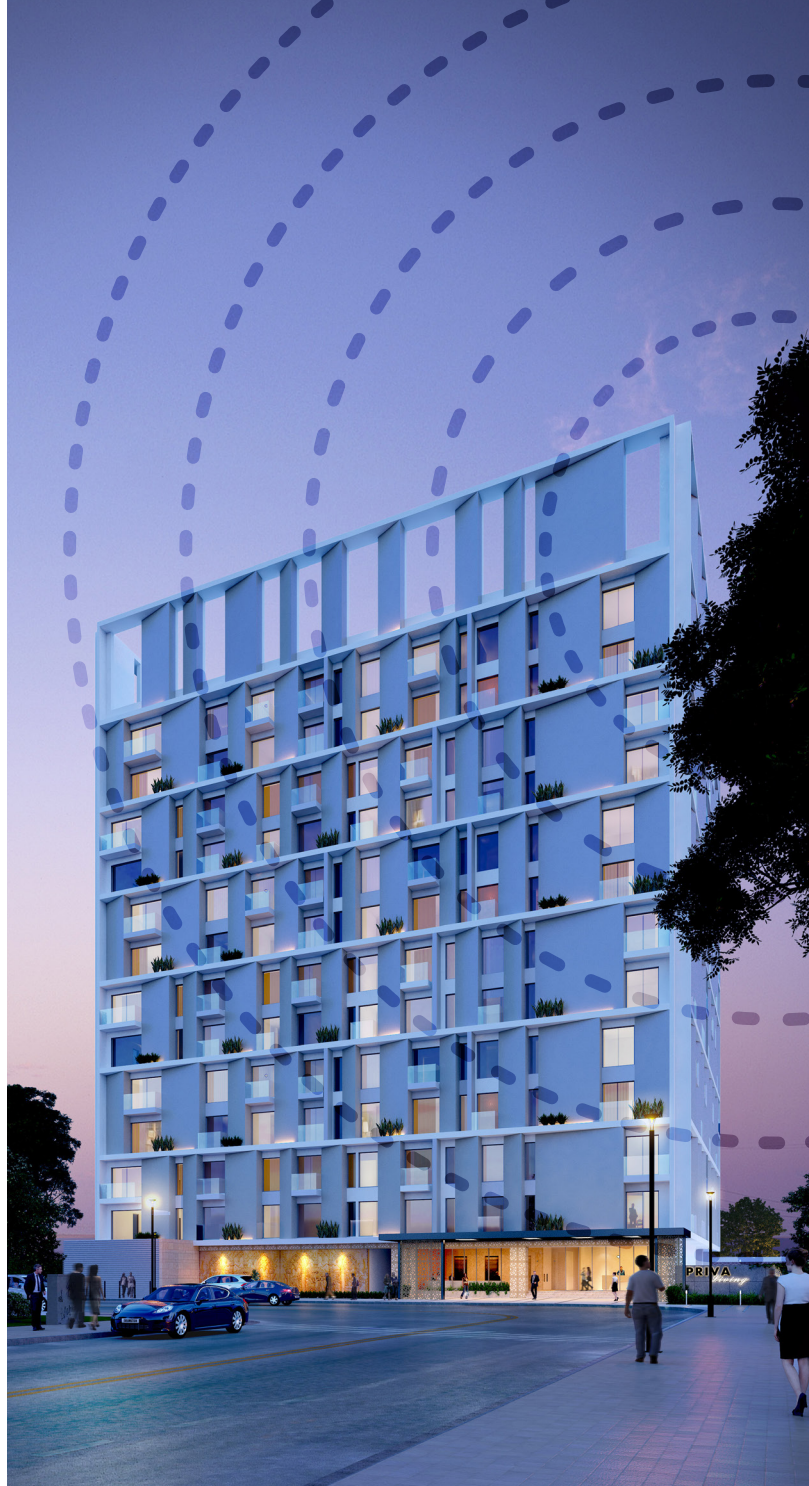




DESTINATION DUBAI World-class shopping, dining and entertainment attractions, beautiful beaches, mysterious deserts and culturally rich heritage sites – Dubai is a must-see holiday destination with something for everyone. From shopping enthusiasts and adventure-seekers to foodies and families, this bustling city has an eclectic mix of destinations and places to suit all tastes. Whether you want to embark on a foodie holiday, or a sightseeing trip, explore our action-packed travel itineraries to get the best out of your Dubai visit.

THE LOCATION





THE LOCATION PRIVA Living is located at the interchange between Sheikh Mohammad Bin Zayed Road and Umm Suqeim Road, surrounded by upscale communities such as Arabian Ranches, Motor City, Dubai Hills etc. The location provides access to most of Dubai's prominent key locations with ease. Some of the major destinations such as Mall of the Emirates, Global Village, Atlantis and Burj Khalifa district (Downtown) can be reached within 5-20 minutes. PRIVA Living is surrounded by the four top schools such as Safa School, Kings' School, Foremarke School and Nord Anglia International School, a major tourist attraction (Dubai Miracle Garden), a hospital and community retail facilities. PRIVA Living fully furnished apartments could be a perfect space for the families.









WELCOME
HOME










WELCOME HOME Fully furnished PRIVÀ Living is one of its kind managed living space for the professionals and young families. It provides a safe haven for people working in Dubai, natural and functional space for relaxation and spending quality time with family and friends. An intelligent and sustainable building using low-tech traditional building method with precise detailing. The PRIVÀ Living development is a benchmark for contemporary and flexible living in Dubai.

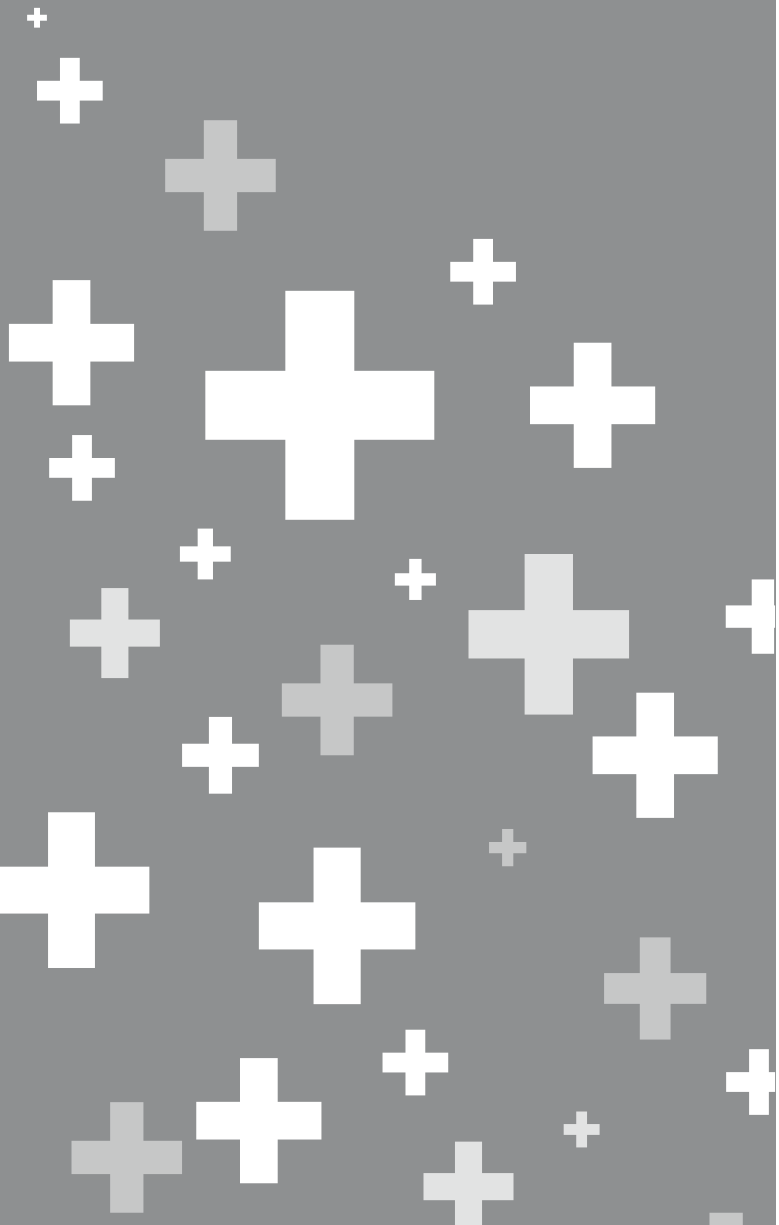
BASICS

-  Digital TV
-  Cleaning service
-  Wi-Fi / high-speed internet access
-  Electricity, water, heating included
-  Welcome gift
-  Gym
-  Pool
-  Lobby

ADDITIONAL SERVICES

-  Laundry service
-  Breakfast
-  Lunch
-  Video on demand
-  Parking

APARTMENT PLANS





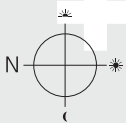
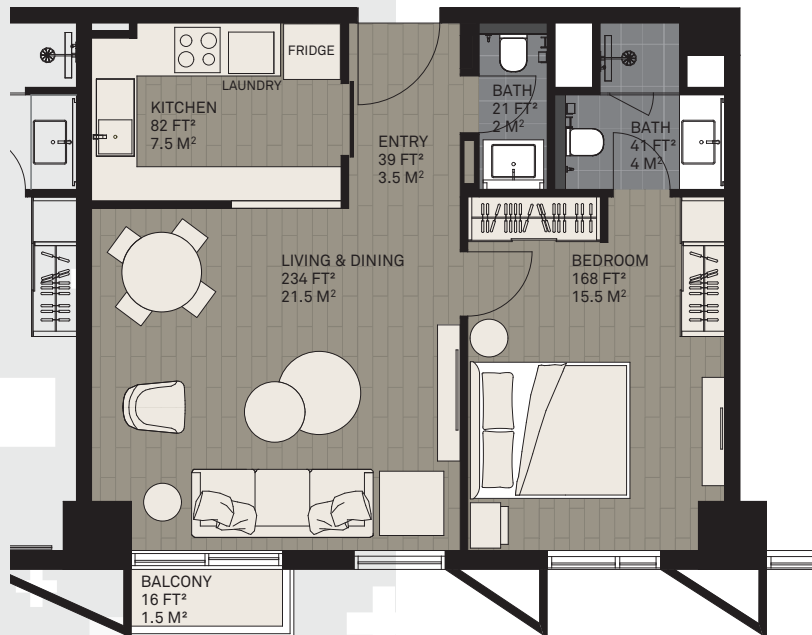
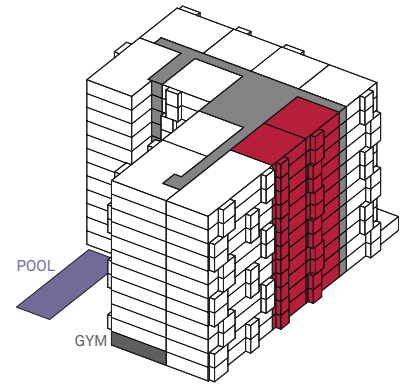
ONE BEDROOM APARTMENT

FLOOR 1 - 12

UNITS 107 | 108 | 207 | 208 | 307 | 308 | 407 | 408 |
 507 | 508 | 607 | 608 | 707 | 708 | 807 | 808 | 907 | 908 |
 1007 | 1008 | 1107 | 1108 | 1207 | 1208

| | | | |
|-------------------|-----------------------------|--|---------------------------|
| SUITE AREA | 680.0 FT ² | | 63.0 M ² |
| BALCONY AREA | 16.0 FT ² | | 1.5 M ² |
| TOTAL AREA | 696.0 FT² | | 64.5 M² |

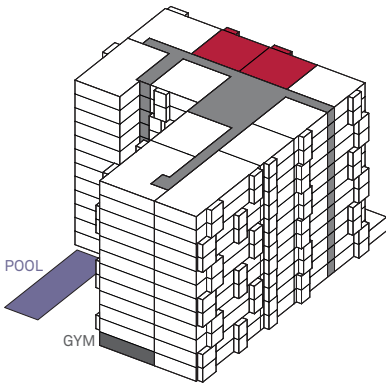
PRIVÀ LIVING



Scale 1:100 (1cm = 1m)

Slight alterations to the floor plans are possible due to varying technical installations and changes in the front appearance on every level.

PRIVÀ LIVING

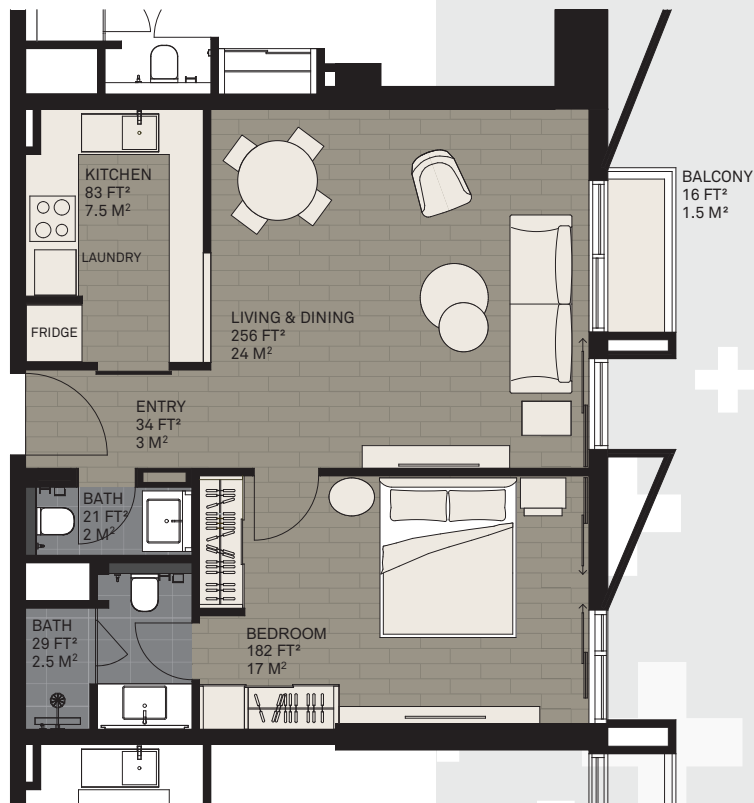


ONE BEDROOM APARTMENT

FLOOR 1 - 12

UNITS 104 | 105 | 204 | 205 | 304 | 305 | 404 |
405 | 504 | 505 | 604 | 605 | 704 | 705 | 804 | 805 |
904 | 905 | 1004 | 1005 | 1104 | 1105 | 1204 | 1205

| | | | |
|--------------|-----------------------|--|---------------------|
| SUITE AREA | 709.0 FT ² | | 66.0 M ² |
| BALCONY AREA | 16.0 FT ² | | 1.5 M ² |
| TOTAL AREA | 725.0 FT ² | | 67.5 M ² |



Scale 1:100 (1cm = 1m)

Slight alterations to the floor plans are possible due to varying technical installations and changes in the front appearance on every level.

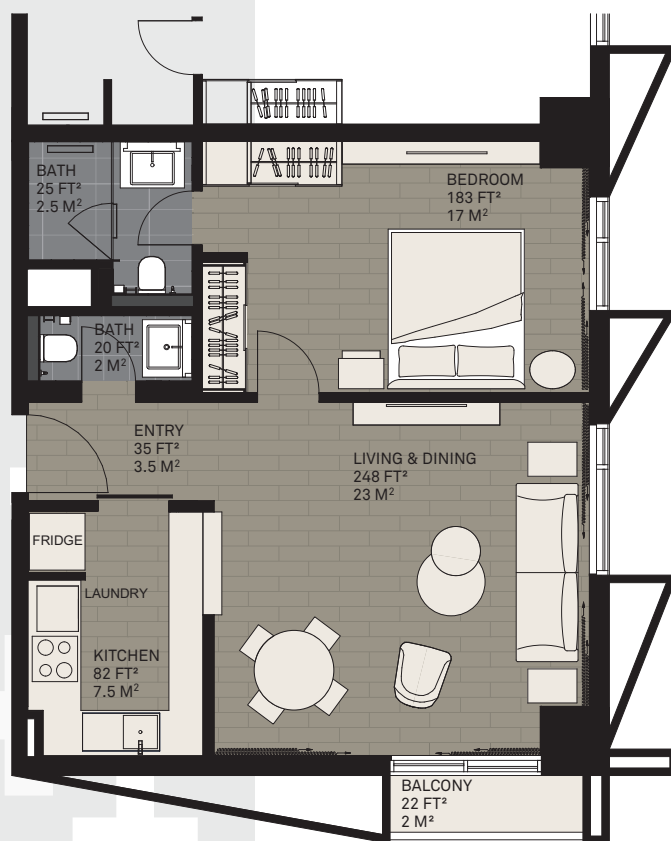
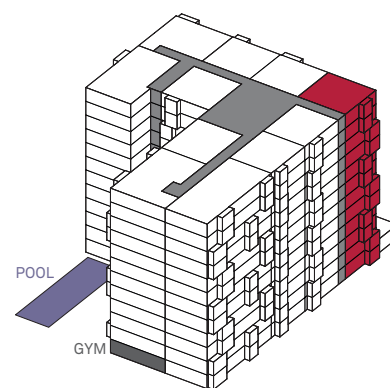
ONE BEDROOM APARTMENT

FLOOR 1 - 12

UNITS 106 | 206 | 306 | 406 | 506 | 606 | 706 | 806 |
906 | 1006 | 1106 | 1206

| | | | |
|--------------|-----------------------|--|---------------------|
| SUITE AREA | 718.0 FT ² | | 66.5 M ² |
| BALCONY AREA | 22.0 FT ² | | 2.0 M ² |
| TOTAL AREA | 740.0 FT ² | | 68.5 M ² |

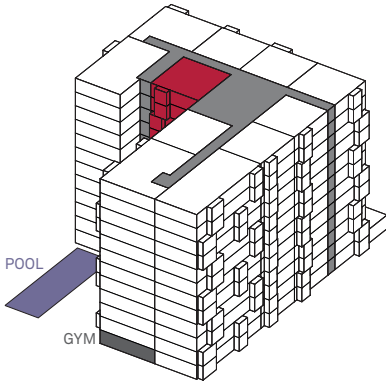
PRIVÀ LIVING



Scale 1:100 (1cm = 1m)

Slight alterations to the floor plans are possible due to varying technical installations and changes in the front appearance on every level.

PRIVÀ LIVING

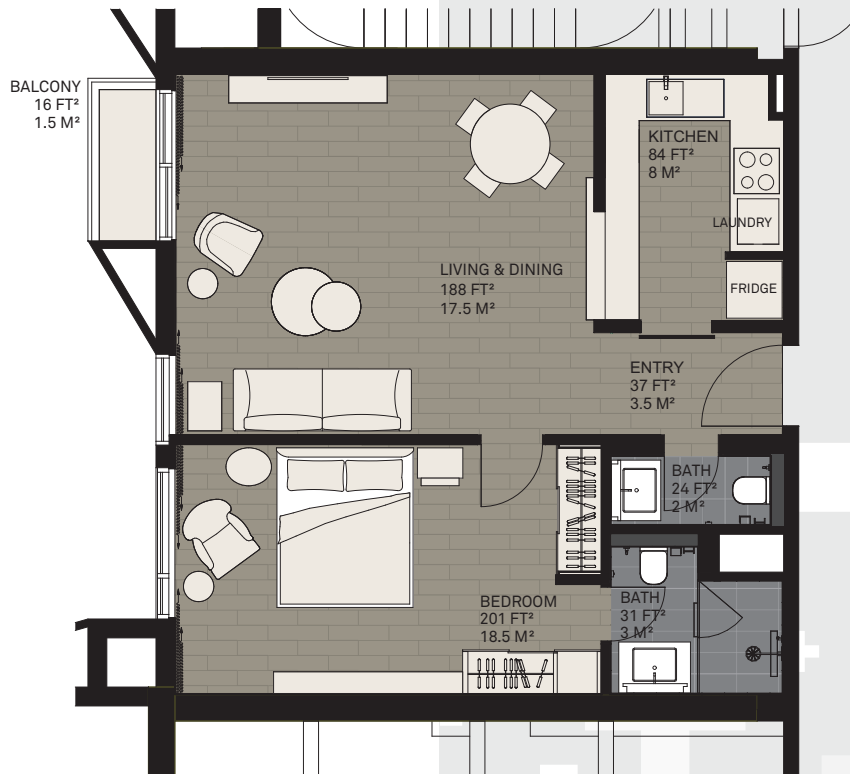


ONE BEDROOM APARTMENT

FLOOR 1 - 12

UNITS 101 | 201 | 301 | 401 | 501 | 601 | 701 | 801 |
901 | 1001 | 1101 | 1201

| | | | |
|--------------|-----------------------|--|---------------------|
| SUITE AREA | 782.5 FT ² | | 72.5 M ² |
| BALCONY AREA | 16.0 FT ² | | 1.5 M ² |
| TOTAL AREA | 798.5 FT ² | | 74.0 M ² |



Scale 1:100 (1cm = 1m)

Slight alterations to the floor plans are possible due to varying technical installations and changes in the front appearance on every level.

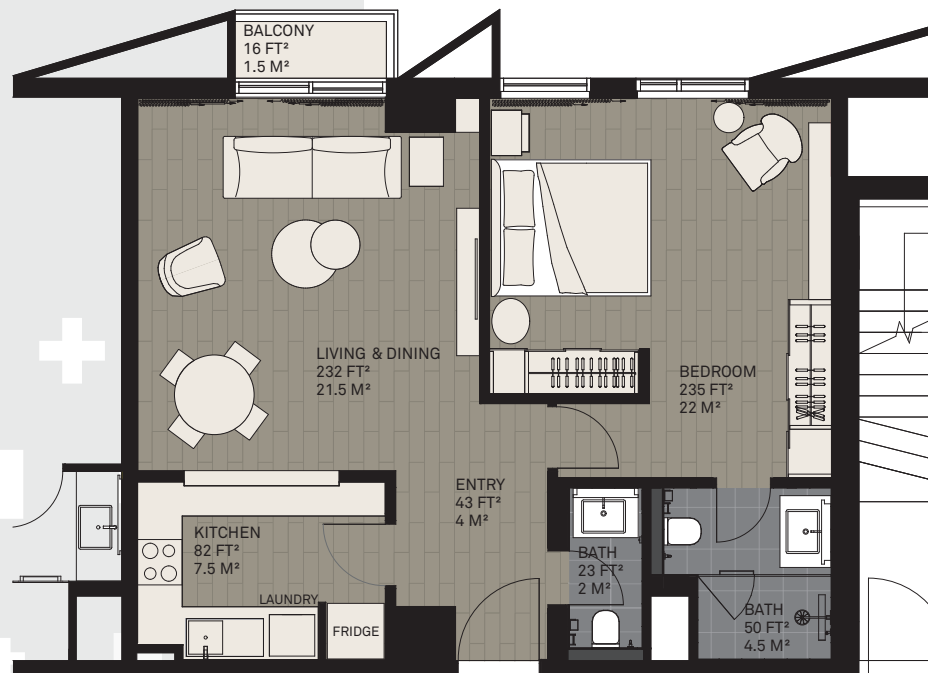
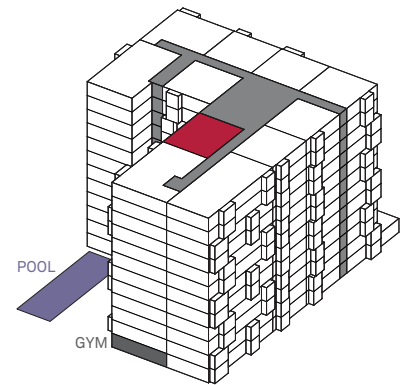
ONE BEDROOM APARTMENT

FLOOR 2 - 12

UNITS 211 | 311 | 411 | 511 | 611 | 711 | 811 | 911 |
1011 | 1111 | 1211

| | | | |
|--------------|-----------------------|--|---------------------|
| SUITE AREA | 802.0 FT ² | | 74.5 M ² |
| BALCONY AREA | 16.0 FT ² | | 1.5 M ² |
| TOTAL AREA | 818.0 FT ² | | 76.0 M ² |

PRIVÀ LIVING



Scale 1:100 (1cm = 1m)

Slight alterations to the floor plans are possible due to varying technical installations and changes in the front appearance on every level.

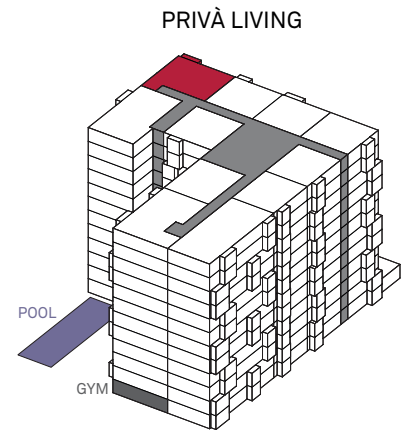


TWO BEDROOM APARTMENT

FLOOR 1 - 12

UNITS 103 | 203 | 303 | 403 | 503 | 603 | 703 | 803 |
903 | 1003 | 1103 | 1203

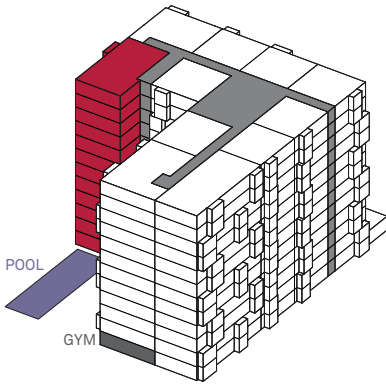
| | | | |
|--------------|-----------------------|--|---------------------|
| SUITE AREA | 906.5 FT ² | | 84.0 M ² |
| BALCONY AREA | 27.0 FT ² | | 2.5 M ² |
| TOTAL AREA | 922.5 FT ² | | 85.5 M ² |



Scale 1:100 (1cm = 1m)

Slight alterations to the floor plans are possible due to varying technical installations and changes in the front appearance on every level.

PRIVÀ LIVING

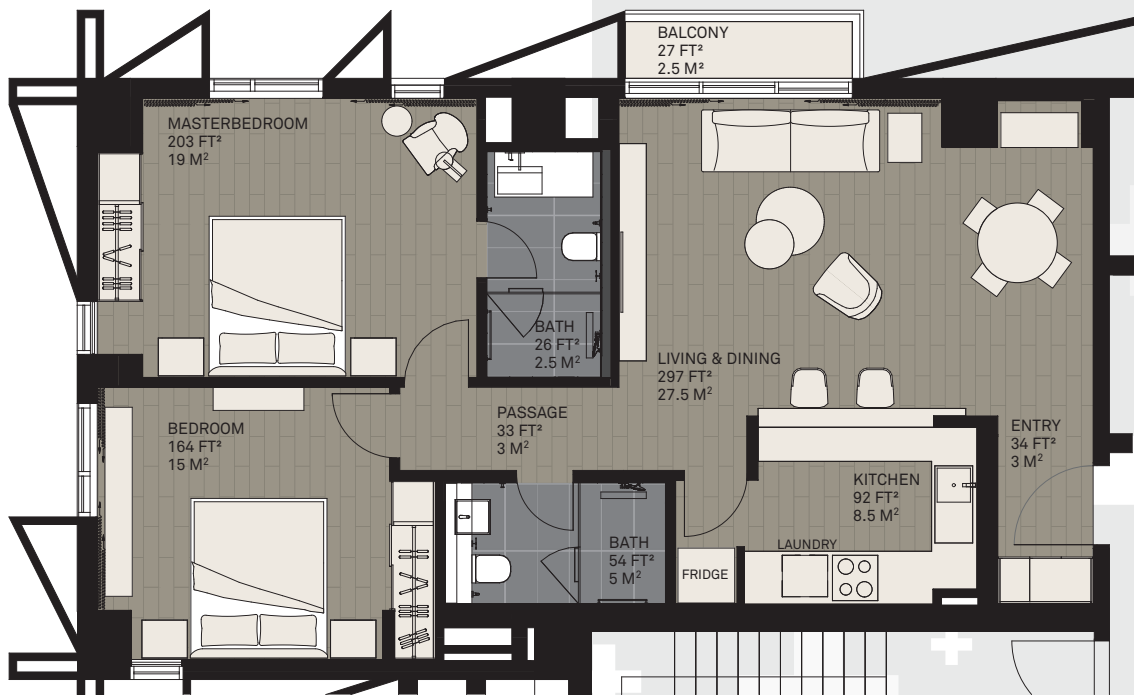


TWO BEDROOM APARTMENT

FLOOR 1 - 12

UNITS 102 | 202 | 302 | 402 | 502 | 602 | 702 | 802 |
902 | 1002 | 1102 | 1202

| | | |
|--------------|------------------------|----------------------|
| SUITE AREA | 1103.0 FT ² | 102.5 M ² |
| BALCONY AREA | 27.0 FT ² | 2.5 M ² |
| TOTAL AREA | 1130.0 FT ² | 105.0 M ² |

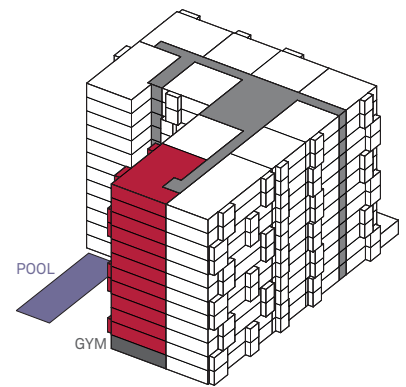


Scale 1:100 (1cm = 1m)

Slight alterations to the floor plans are possible due to varying technical installations and changes in the front appearance on every level.

TWO BEDROOM APARTMENT

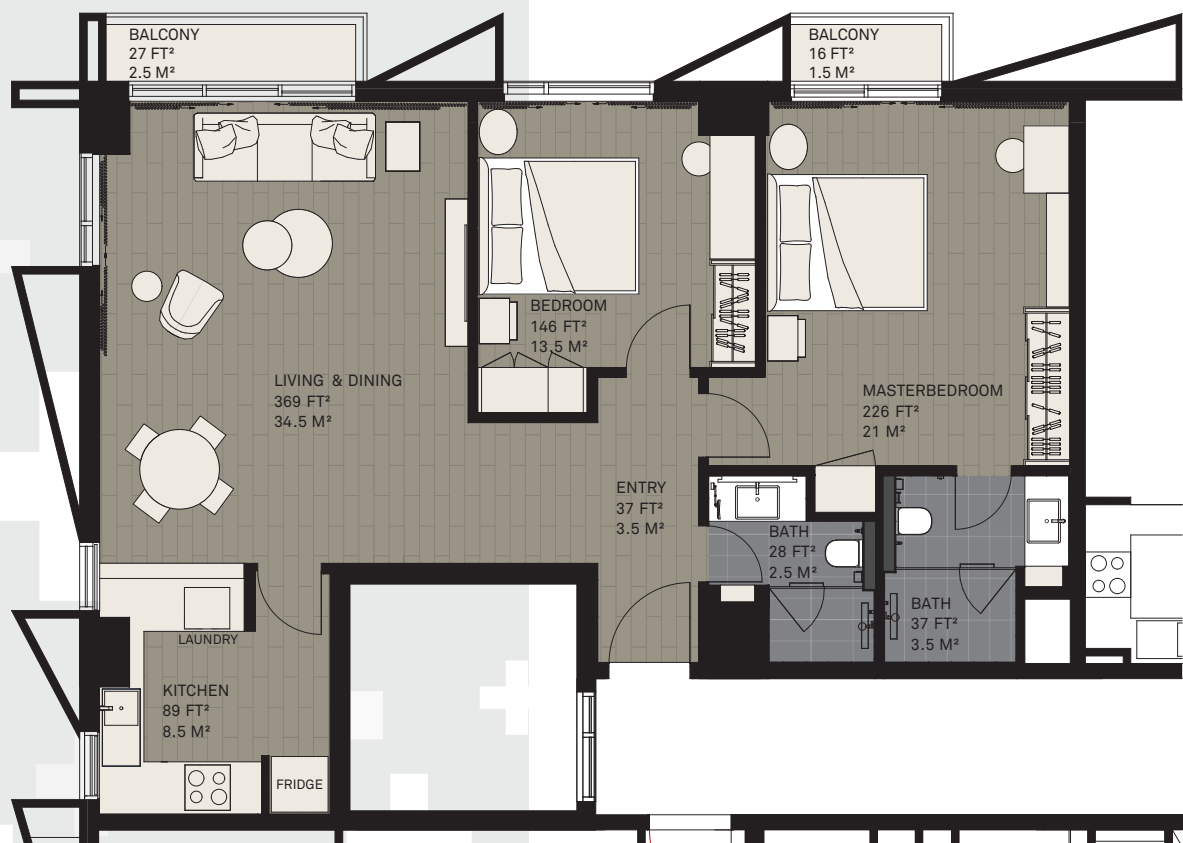
PRIVÀ LIVING



FLOOR 2 - 12

UNITS 210 | 310 | 410 | 510 | 610 | 710 | 810 | 910 |
1010 | 1110 | 1210

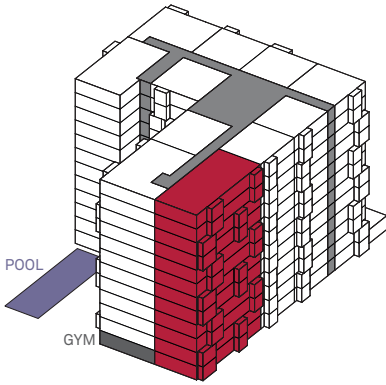
| | | | |
|--------------|------------------------|--|----------------------|
| SUITE AREA | 1148.5 FT ² | | 106.5 M ² |
| BALCONY AREA | 43.0 FT ² | | 4.0 M ² |
| TOTAL AREA | 1191.5 FT ² | | 110.5 M ² |



Scale 1:100 (1cm = 1m)

Slight alterations to the floor plans are possible due to varying technical installations and changes in the front appearance on every level.

PRIVÀ LIVING

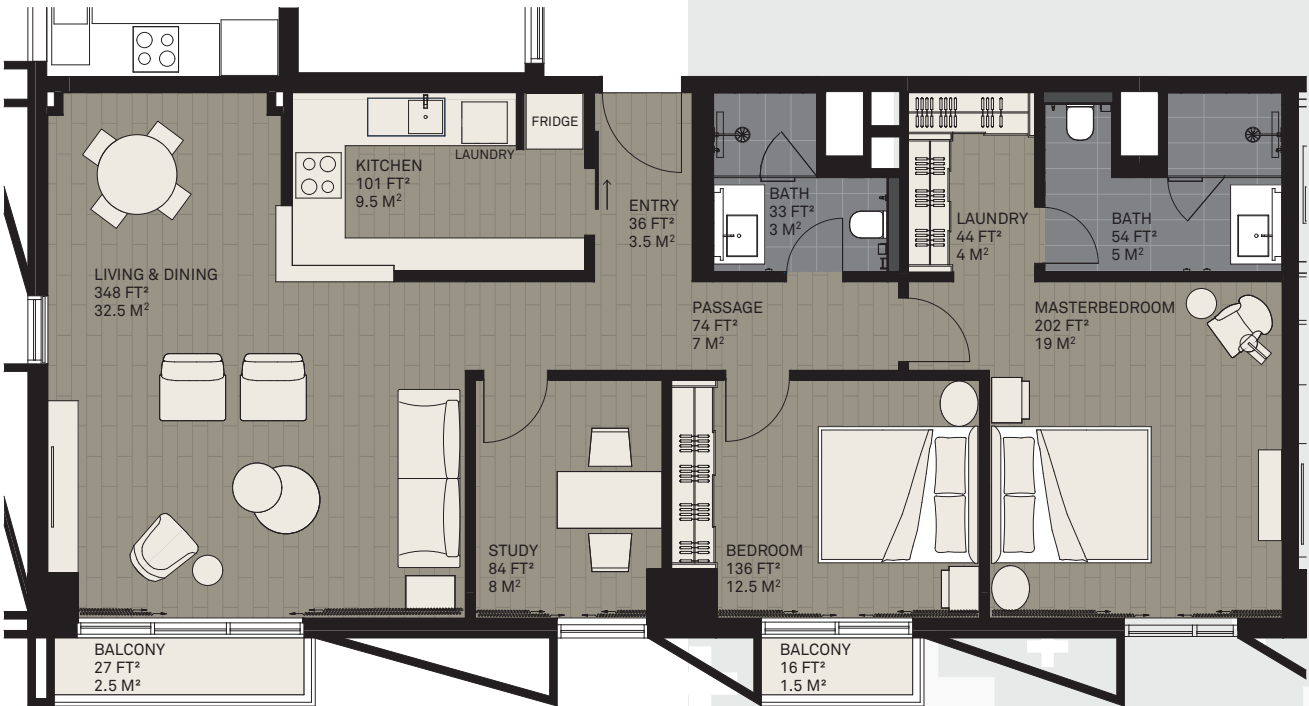


TWO BEDROOM AND STUDY APARTMENT

FLOOR 1 - 12

UNITS 109 | 209 | 309 | 409 | 509 | 609 | 709 | 809 |
909 | 1009 | 1109 | 1209

| | | | |
|--------------|------------------------|--|----------------------|
| SUITE AREA | 1327.0 FT ² | | 123.5 M ² |
| BALCONY AREA | 43.0 FT ² | | 4.0 M ² |
| TOTAL AREA | 1370.0 FT ² | | 127.5 M ² |



Scale 1:100 (1cm = 1m)

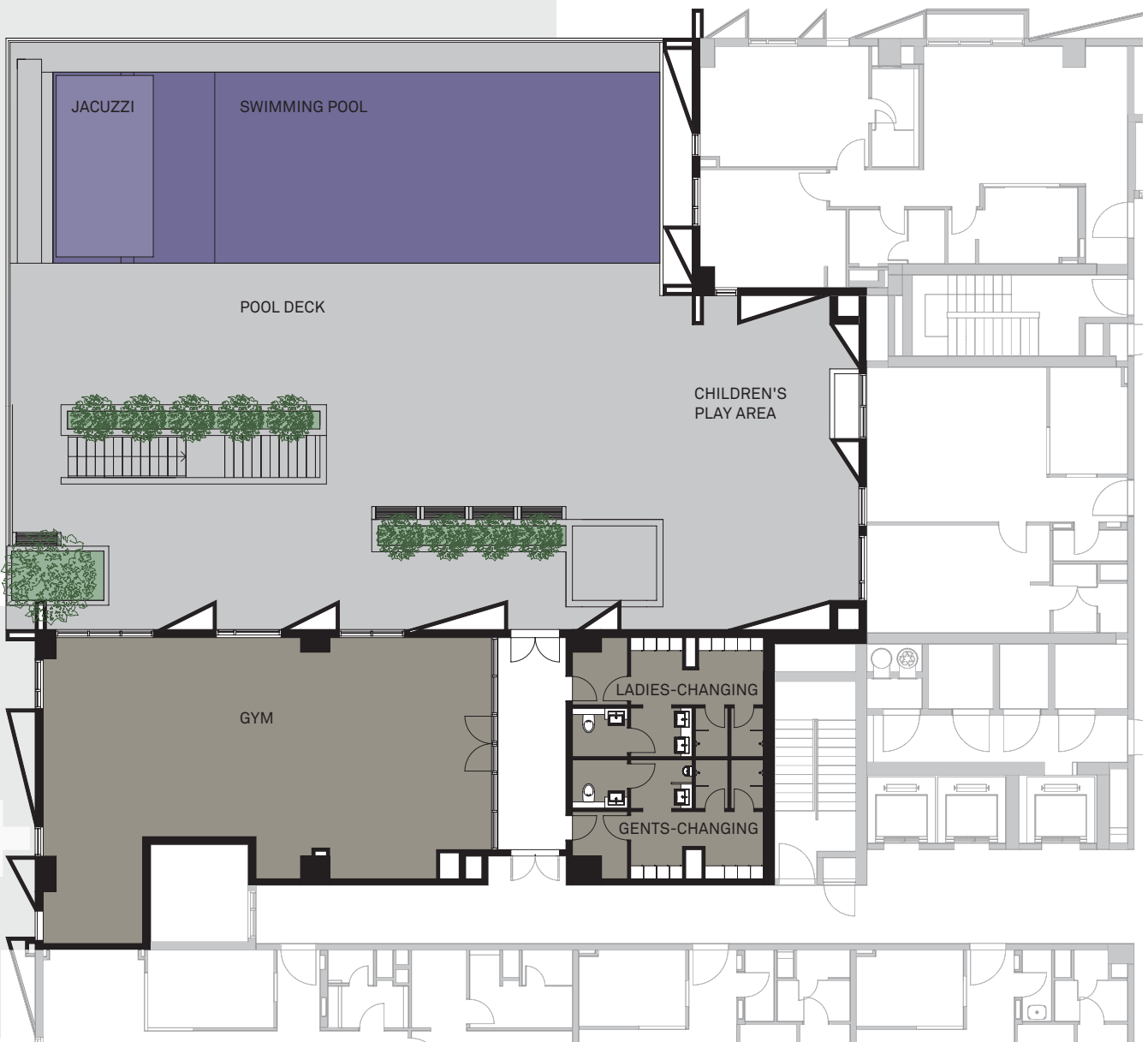
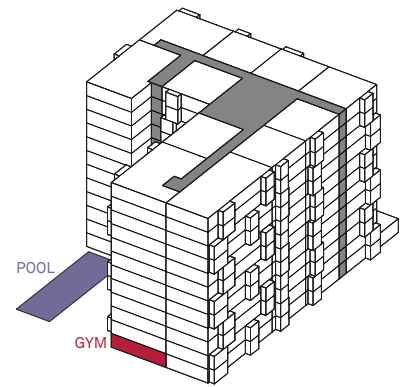
Slight alterations to the floor plans are possible due to varying technical installations and changes in the front appearance on every level.





POOL & GYM FIRST FLOOR

PRIVÀ LIVING



Scale 1:200



ARCHITECTURAL FINISHES BOARD

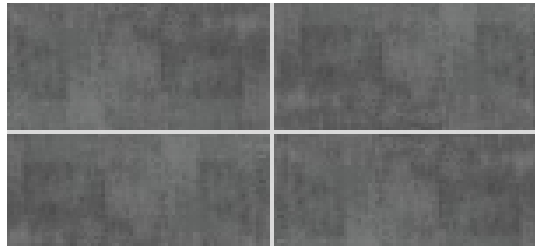


FLOOR FINISHES



WOOD TILES

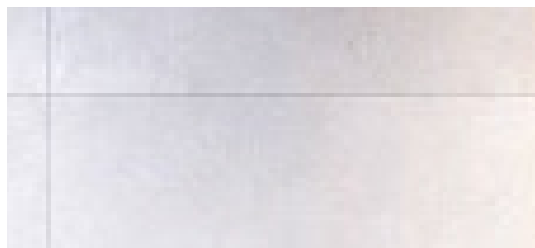
Warm washed - out finish. Dimensions 200 x 800 mm



CONCRETE EFFECT

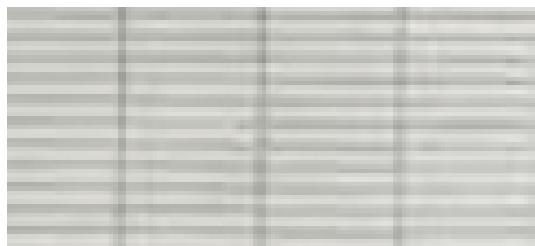
TILES Warm grey / Matt finish. Dimensions 300 x 600 mm.

BATHROOM WALL FINISHES



GENERAL BATHROOM TILES

White / Matt finish. Dimensions 600 x 600 mm.



ACCENT TILES

White / Matt finish. Dimensions 33 x 69 mm.



High end wooden textured ceramic flooring | Jaquar bath fittings and Gebrit sanitaryware | Scratch resistance Corian vanity counters | Built-in Kitchen with white goods | Built-in Wardrobes | High-end branded furniture & fixtures

CONTACTS





PRIVÀ *Living*

PRIVÀ Living, Dubai

Plot No. 272, Arjan

Al Barsha South III

Next to Mediclinic Parkview Hospital

Dubai UAE

www.privaliving.com

RENTALS

Eaglewing Hospitality Services

1503, Sobha Sapphire

Business Bay

Dubai UAE

+971 4 276 5774

A PRODUCT OF

Fortimo Group Ltd.

Rorschacherstrasse 302

CH-9016 St.Gallen

Switzerland

+41 71 844 06 66

www.fortimo.ch





PRIVÀ • ARJAN - DUBAI - UAE
Living

